

# Development of EuroVelo 11 in Hungary

Miklós Berencsi

Centre for Development of Active and Ecotourism

“EuroVelo Latgale route” Conference

30 November 2021

# Cycling tourism in Hungary

- Diverse landscape
- Wine, water, gastronomy, culture
- HU cycling network 9100 km
  - 4000 km cycle path or lane
  - 5100 km designated cyclist friendly road
- Extensive rail network
- Cyclist friendly services

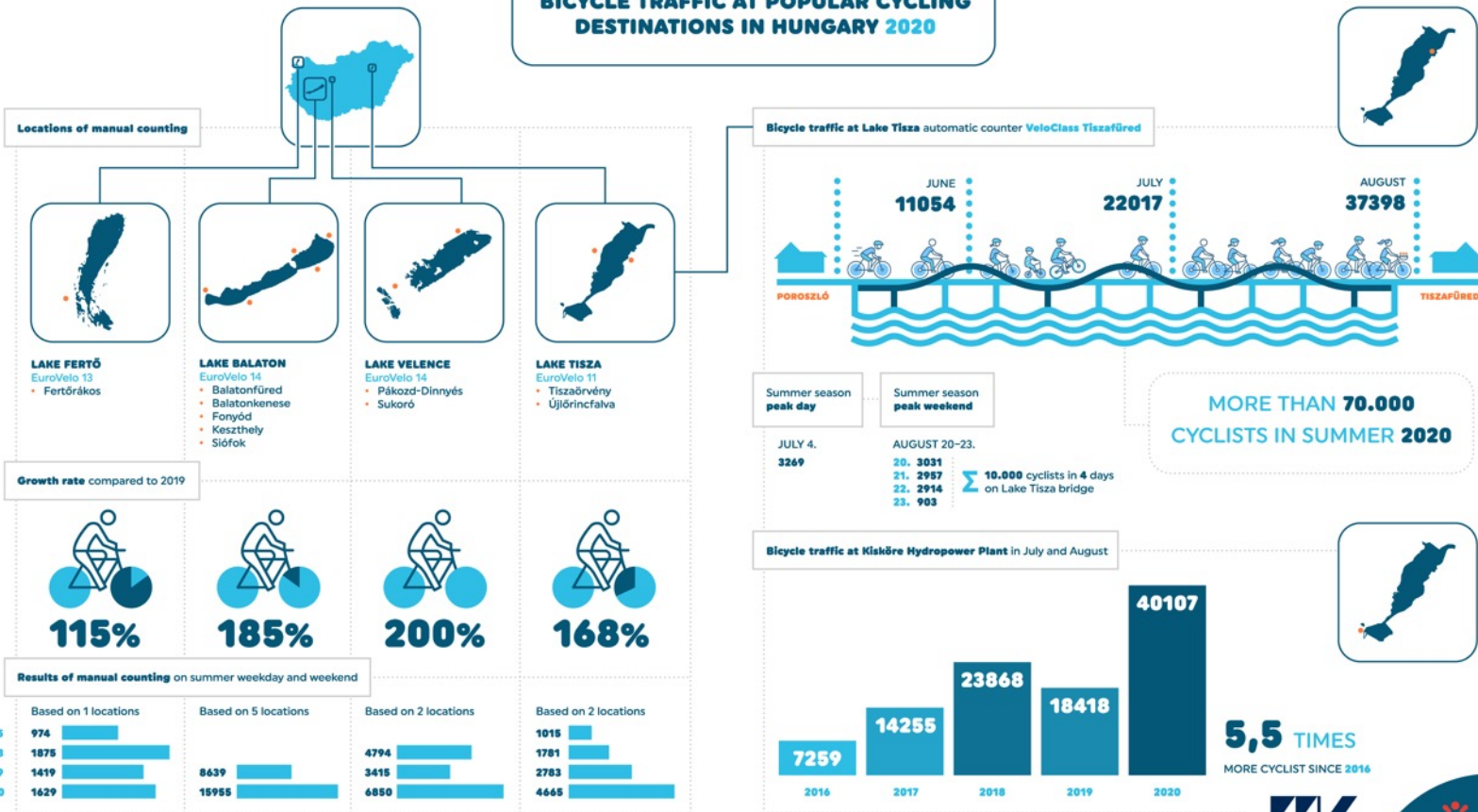
# Cycling tourism in Hungary

- Cycling tourism is blooming (esp. pandemic)
- #2 recreational activity (#1 is hiking)
- Improvements on infrastructure
- More services for cyclists
- Promotion and communication

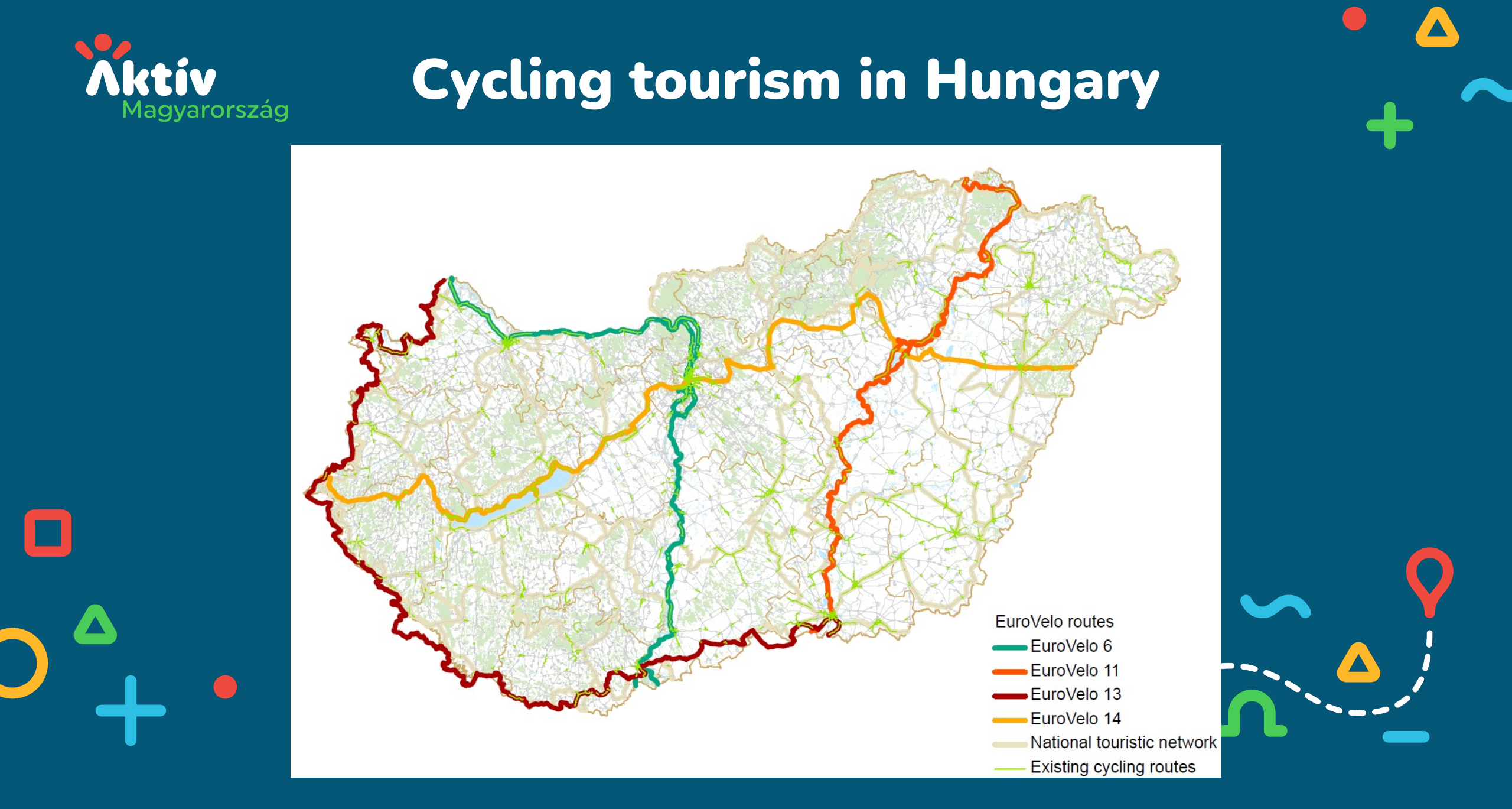
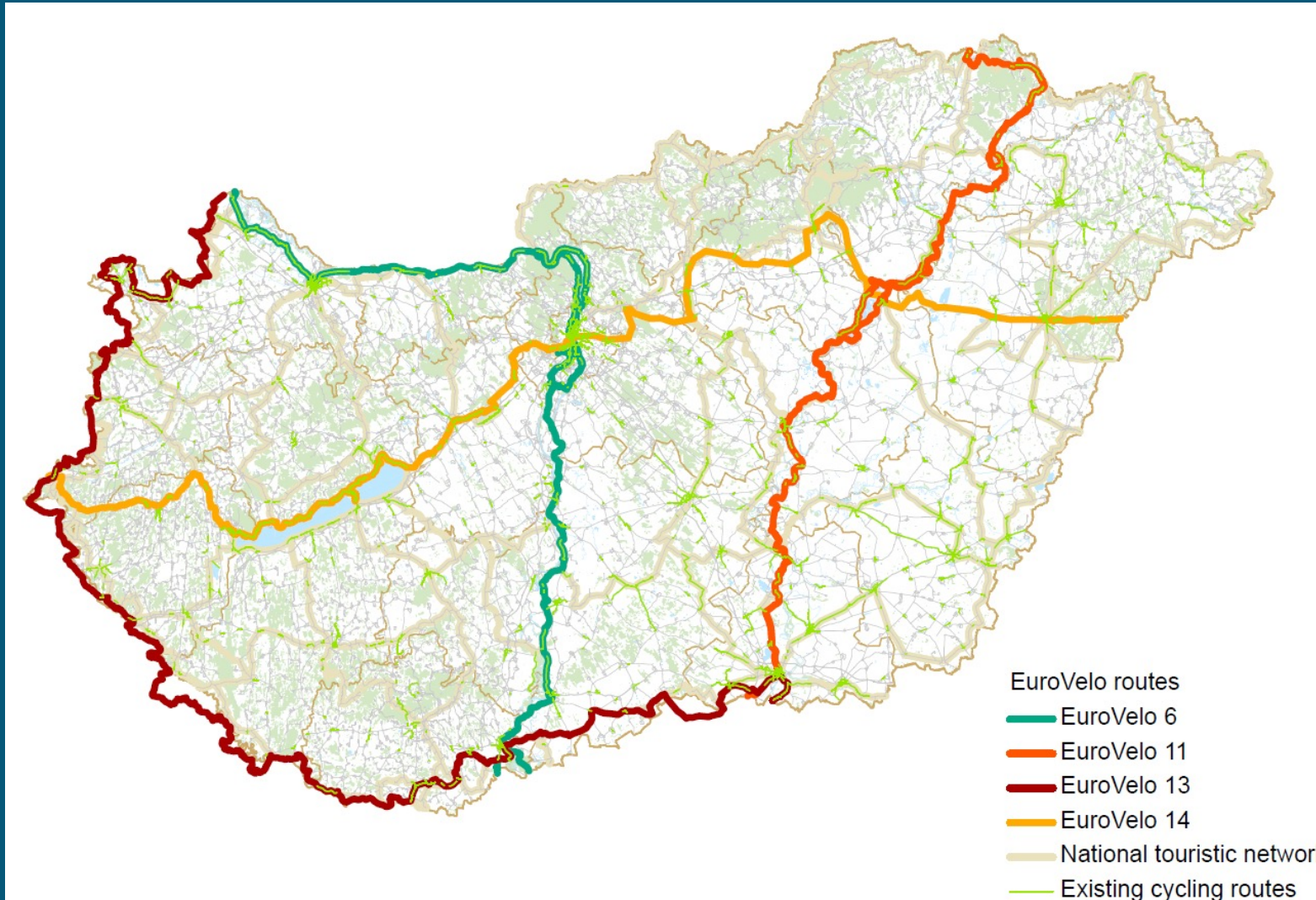


# Cycling tourism in Hungary

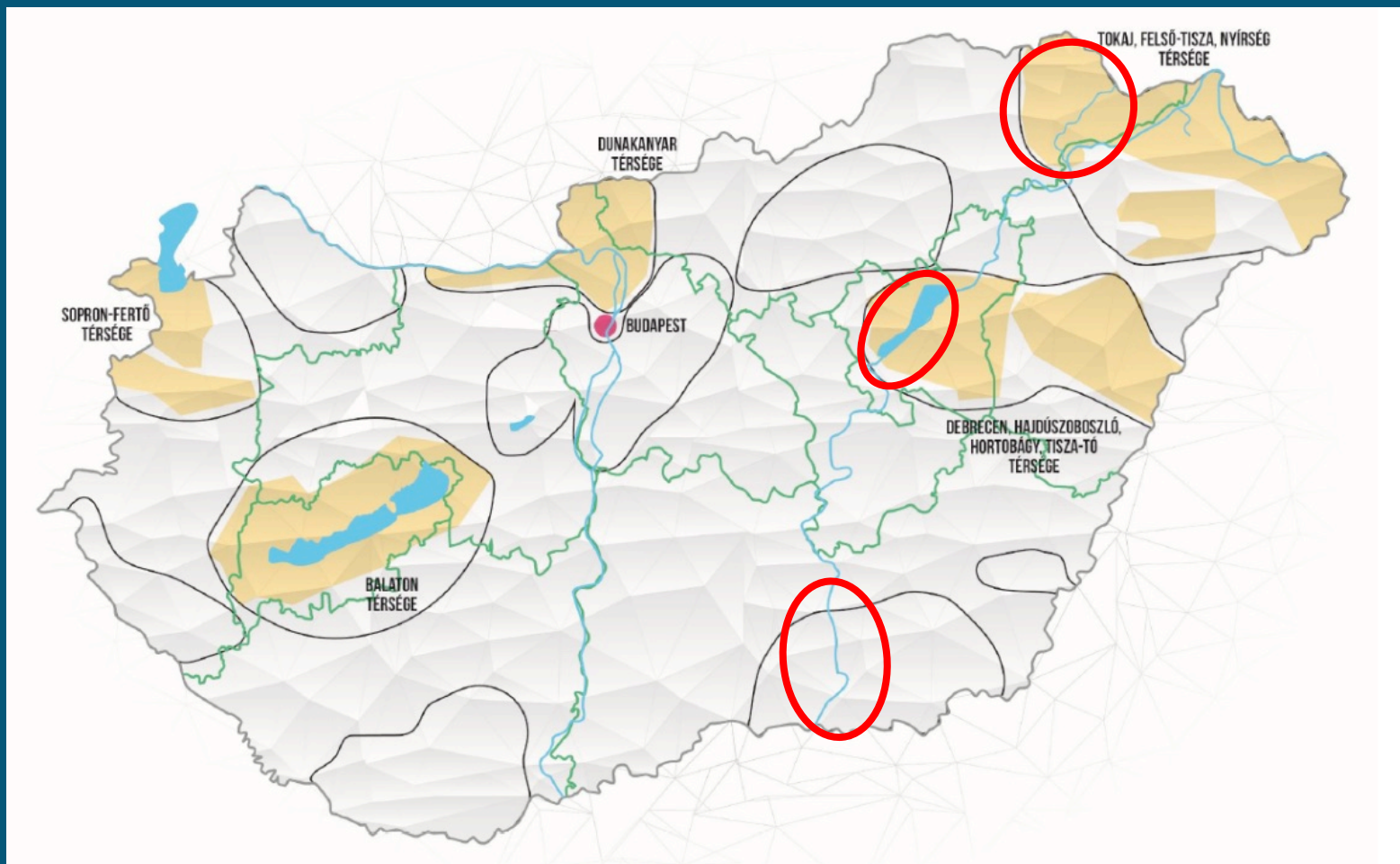
## BICYCLE TRAFFIC AT POPULAR CYCLING DESTINATIONS IN HUNGARY 2020



# Cycling tourism in Hungary



# Priority touristic regions



# NECC in Hungary

- Cycling Coordination Department – Ministry for Innovation and Technology  
legislation, standards, funds, coordination
- Centre for Development of Active and Ecotourism  
cycling tourism, strategy 2020-2030
- Hungarian Cycling Tourism Association (NGO)  
expertise, local groups

# EuroVelo website



## EuroVelo 11 East Europe Route

**6,550**  
km long

[STAGES & COUNTRIES](#)   [TOP](#)

Labelled by some bicycle tourists as the 'Beast of the East', this lengthy route with its 6,550 km stretches from the north-east tip of Norway all the way down to sunny Greece. EuroVelo 11 will lead you through six extremely different capital cities: hip Helsinki, charming Vilnius, the 'Phoenix City' of Warsaw, the 'White City' of Belgrade, exciting Skopje and, last but not least, enchanting ancient Athens. Give it a go and discover a new favourite destination!

**EuroVelo 11 - East Europe Route**

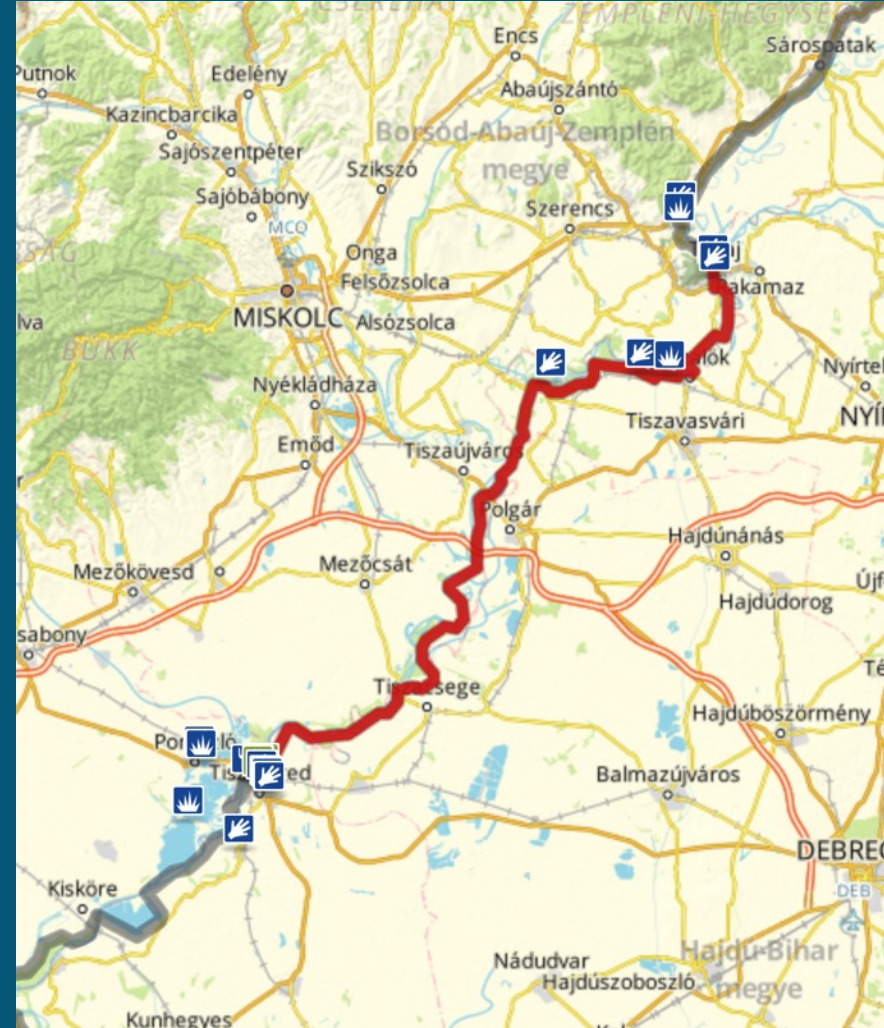
**Stages**

- Kéked – Sárospatak
- Sárospatak – Tokaj
- Tokaj – Tiszafüred
- Tiszafüred – Kisköre



# EuroVelo website

- ECF GIS platform
- Dedicated site for all HU EuroVelo routes
- HU/ENG/GER languages
- EuroVelo 11 - 8 daily sections
- Downloadable GPX tracks
- Short route descriptions
- POIs



# Route signage

Design manual for touristic routes signs

Designation of cycling routes

- low traffic public roads
- forestry roads
- dams
- agricultural roads



# Route signage

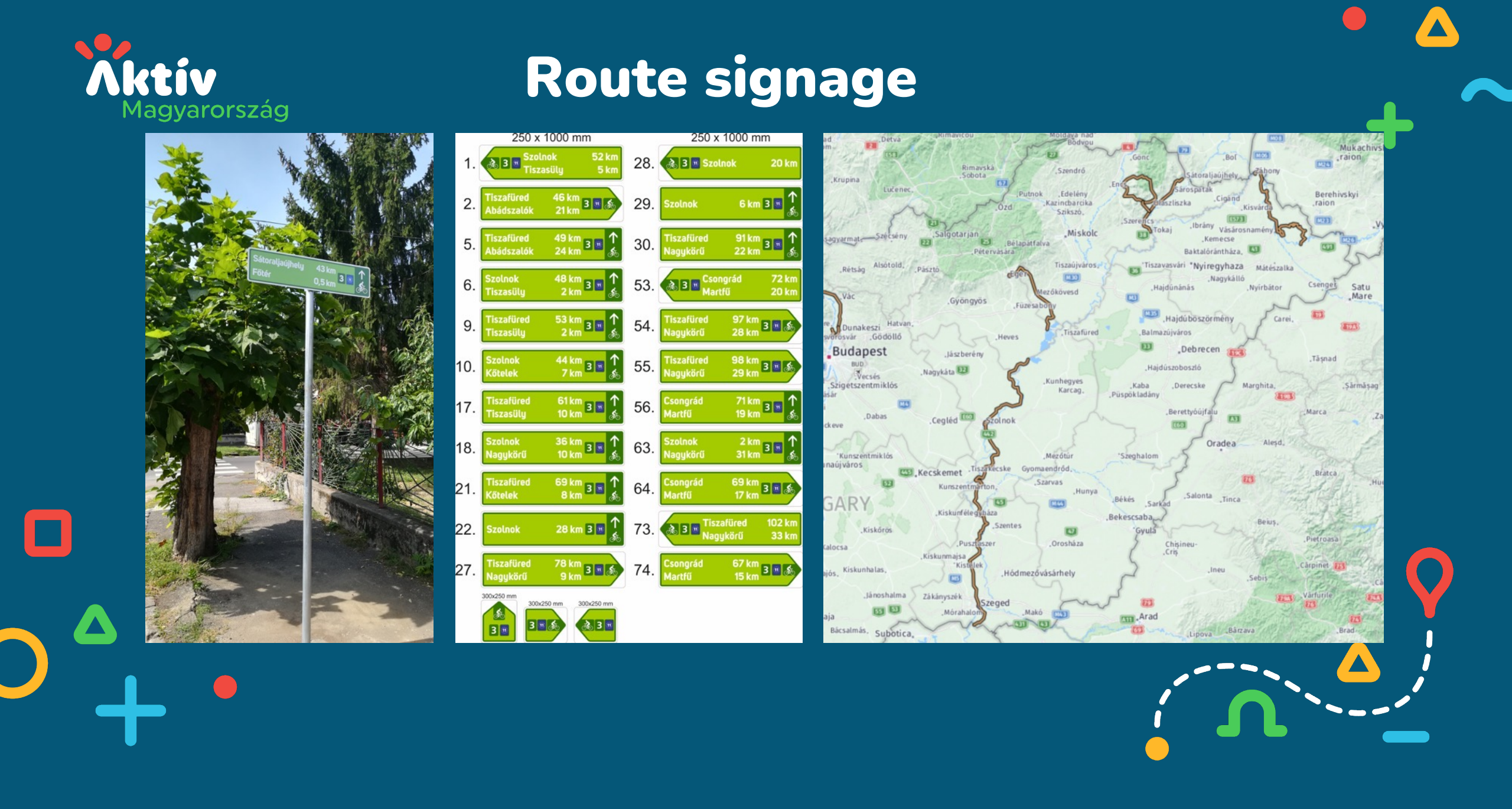
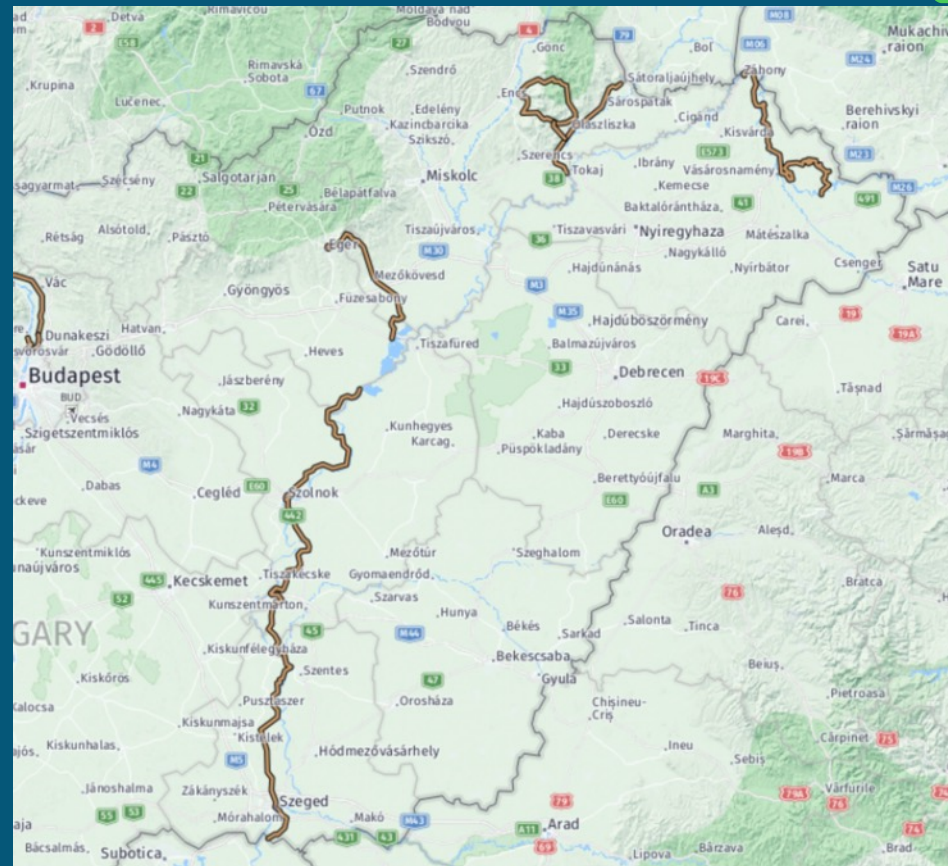


# Route signage



250 x 1000 mm		250 x 1000 mm	
1. Szőlök Tizsasülly 52 km 5 km	28. Szőlök 20 km	2. Tizsafüred Abádszalók 46 km 21 km	29. Szőlök 6 km
5. Tizsafüred Abádszalók 49 km 24 km	30. Tizsafüred Nagykőrű 91 km 22 km	6. Szőlök Tizsasülly 48 km 2 km	53. Csongrád Martfű 72 km 20 km
9. Tizsafüred Tizsasülly 53 km 2 km	54. Tizsafüred Nagykőrű 97 km 28 km	10. Szőlök Kötelek 44 km 7 km	55. Tizsafüred Nagykőrű 98 km 29 km
17. Tizsafüred Tizsasülly 61 km 10 km	56. Csongrád Martfű 71 km 19 km	18. Szőlök Nagykőrű 36 km 10 km	63. Szőlök Nagykőrű 2 km 31 km
21. Tizsafüred Kötelek 69 km 8 km	64. Csongrád Martfű 69 km 17 km	22. Szőlök 28 km	73. Tizsafüred Nagykőrű 102 km 33 km
27. Tizsafüred Nagykőrű 78 km 9 km	74. Csongrád Martfű 67 km 15 km		

300x250 mm 300x250 mm 300x250 mm



# EuroVelo 11

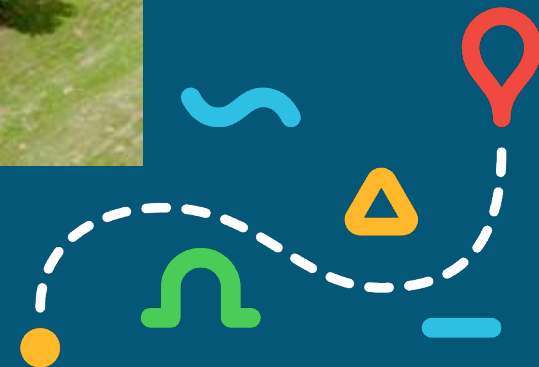
- 440 km in Hungary
- River Bodrog
- River Tisza
- Signposted (Tokaj – Kisköre in 2022)
- Dams
- Low traffic public roads



# EuroVelo 11



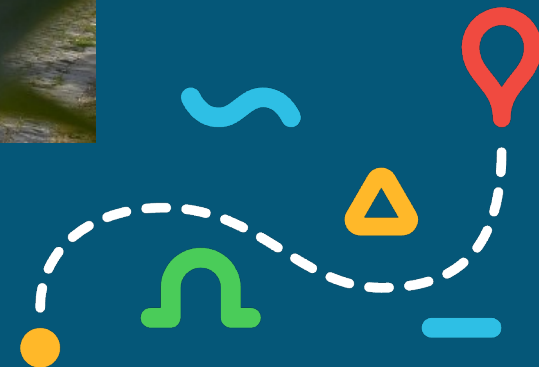
Sárospatak



# EuroVelo 11



Wine cellars Tokaj region



# EuroVelo 11



Zemplén





# EuroVelo 11



Lake Tisza dam

# EuroVelo 11



Lake Tisza



# EuroVelo 11

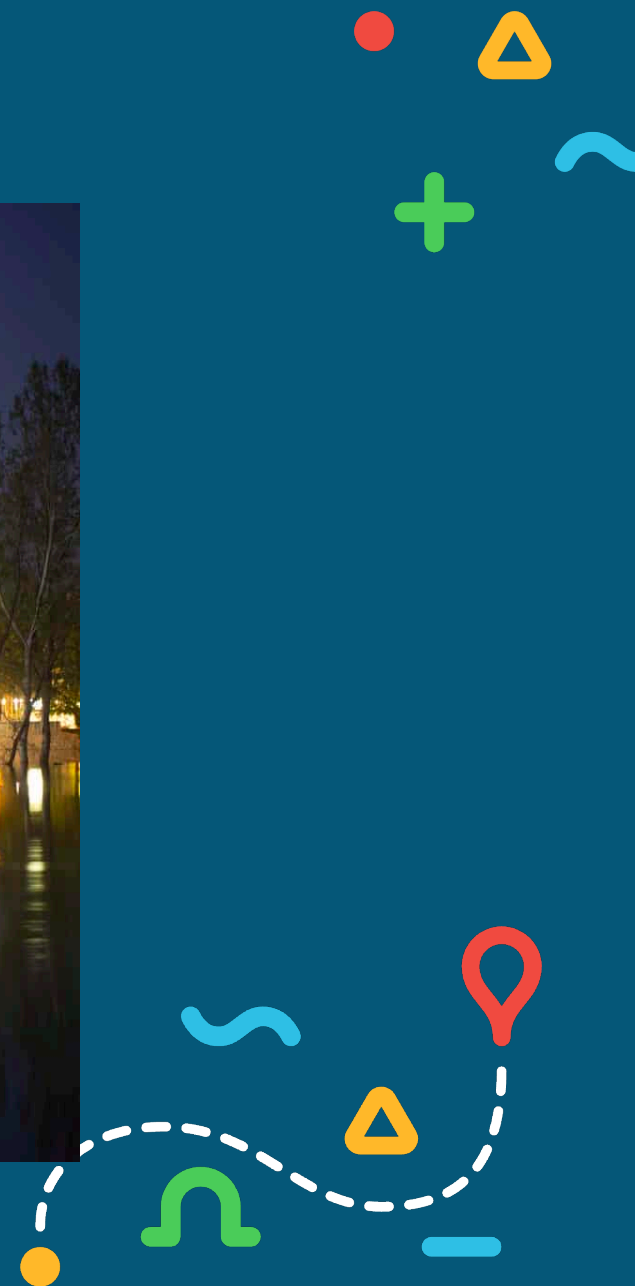


Tizakécske

# EuroVelo 11



Szolnok



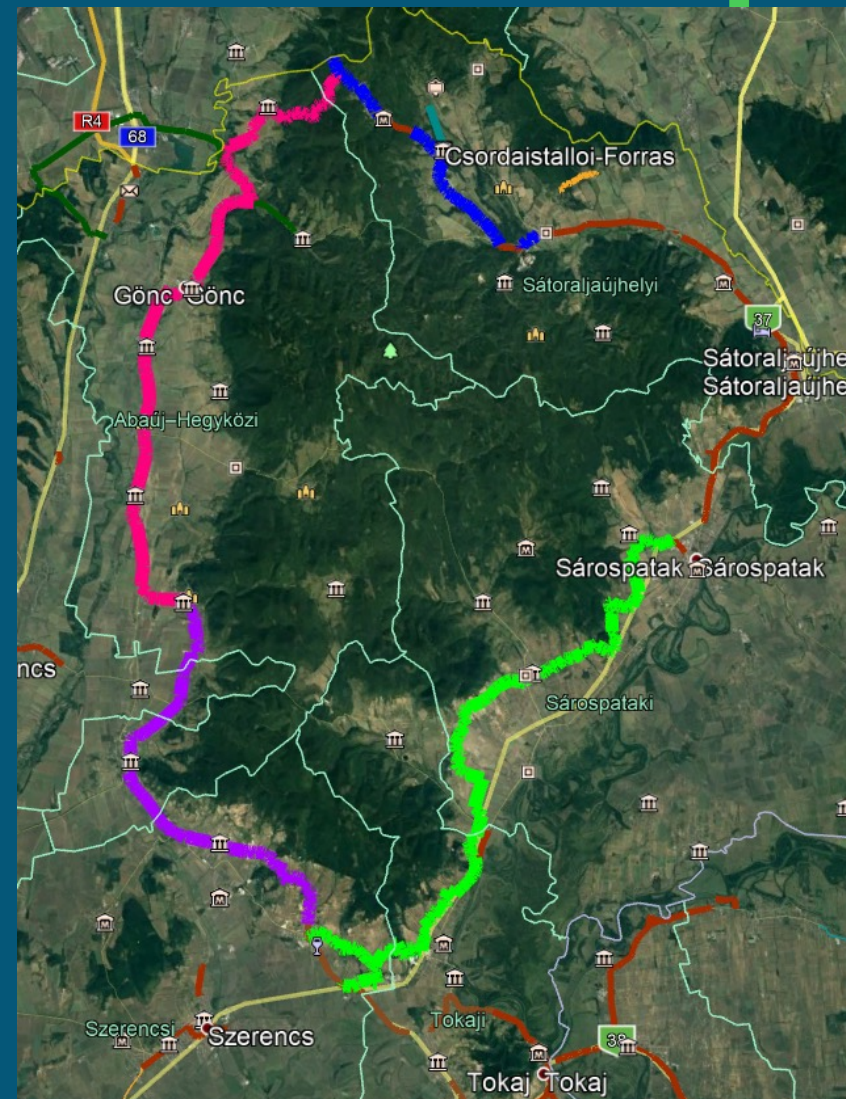
# EuroVelo 11



Szeged downtown

## Developments – Tokaj-Zemplén region

- Panorama cycling route
- Grape yards, cellars
- 150 km new cycling routes
- Off-road routes
- Improvements of services
- New signs
- Information centres
- Ebike rentals



# EuroVelo 11

Developments – Tokaj-Zemplén region



# EuroVelo 11

Developments – Tokaj-Zemplén region





# EuroVelo 11

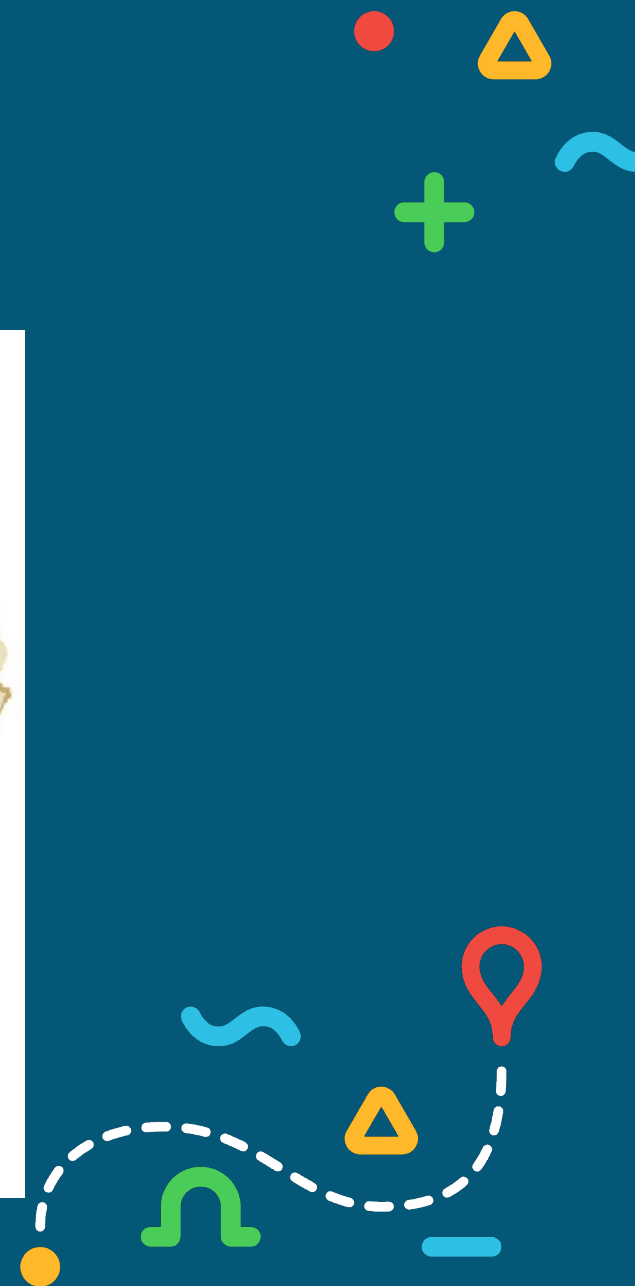
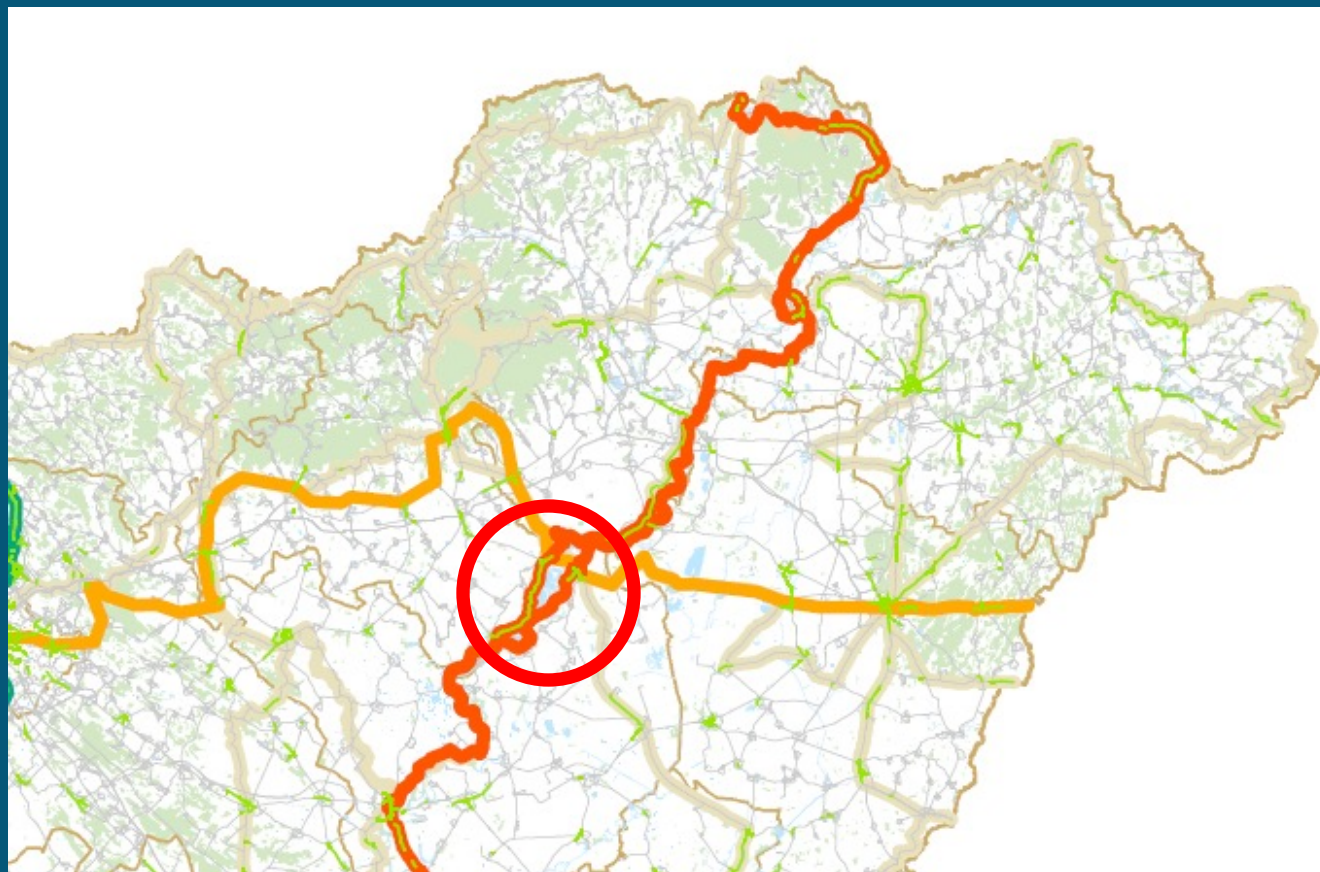
## Developments – Lake Tisza region

- New bridge and cycle path
- 70 km loop
- Cycling centre
- Road reconstructions
- Rest areas and toilets
- New signs
- Bike ferry
- EuroVelo 14 route crossing



# EuroVelo 11

Developments – Lake Tisza region



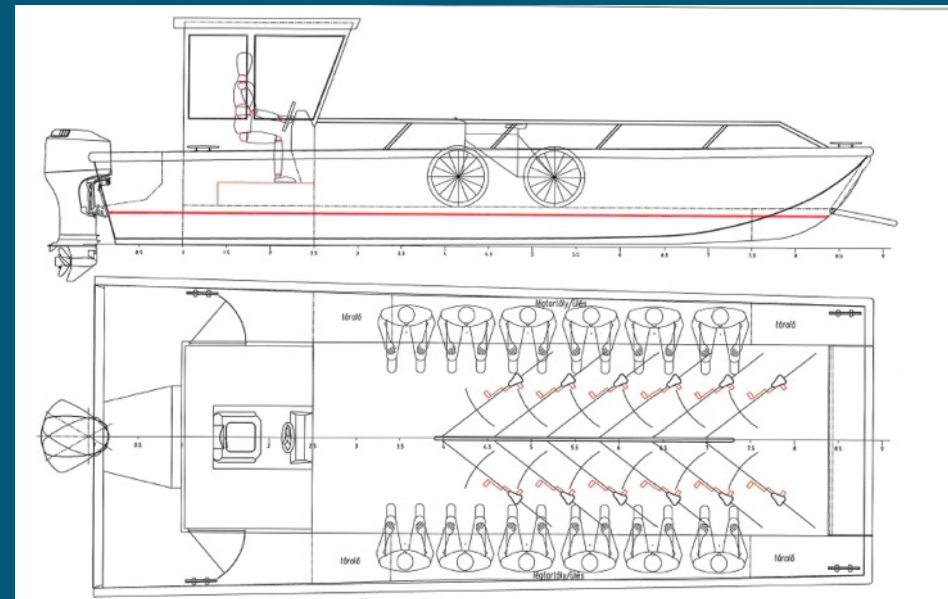
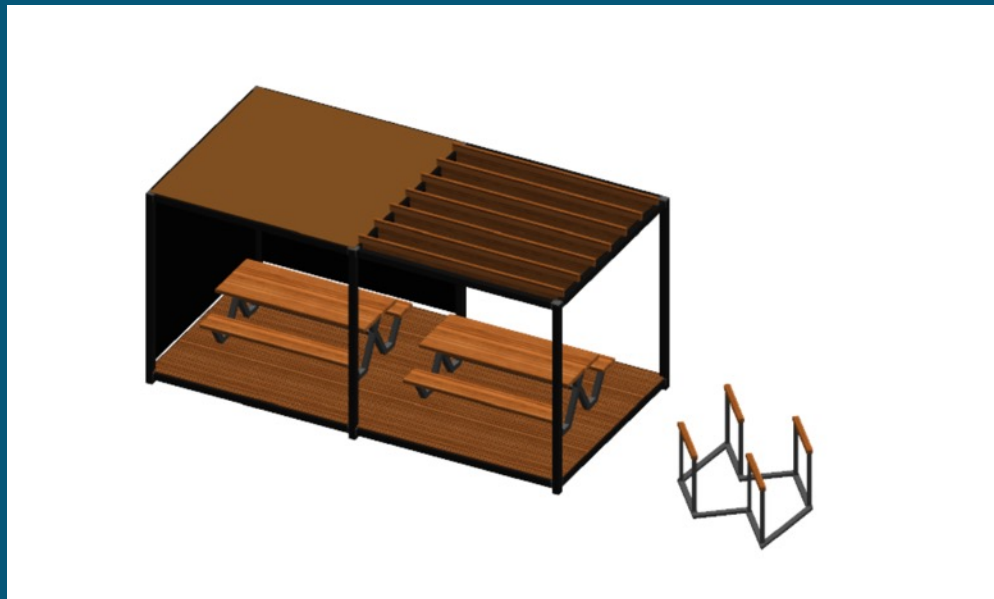
# EuroVelo 11

Developments – Lake Tisza region



# EuroVelo 11

Developments – Lake Tisza region



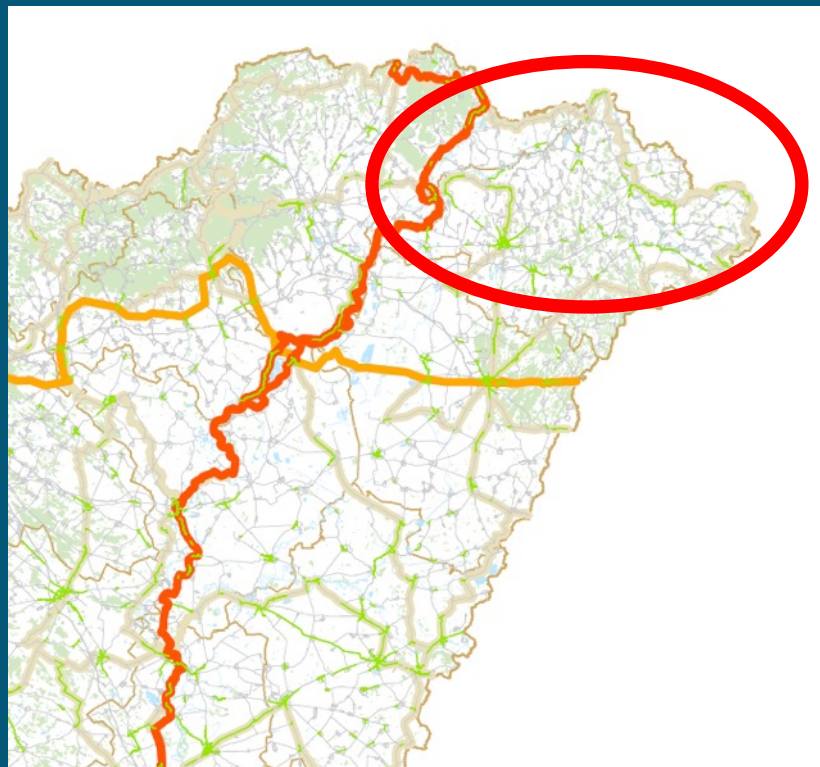
# EuroVelo 11

Developments – Lake Tisza region



# EuroVelo 11

Developments – Upper Tisza region



# EuroVelo 11

## Developments – Upper Tisza region



# EuroVelo 11

## Developments – Upper Tisza region

- Route signage
- Cycling centre
- Rest areas and toilets
- Visitor centres
- GIS survey and database
- Bookable offers





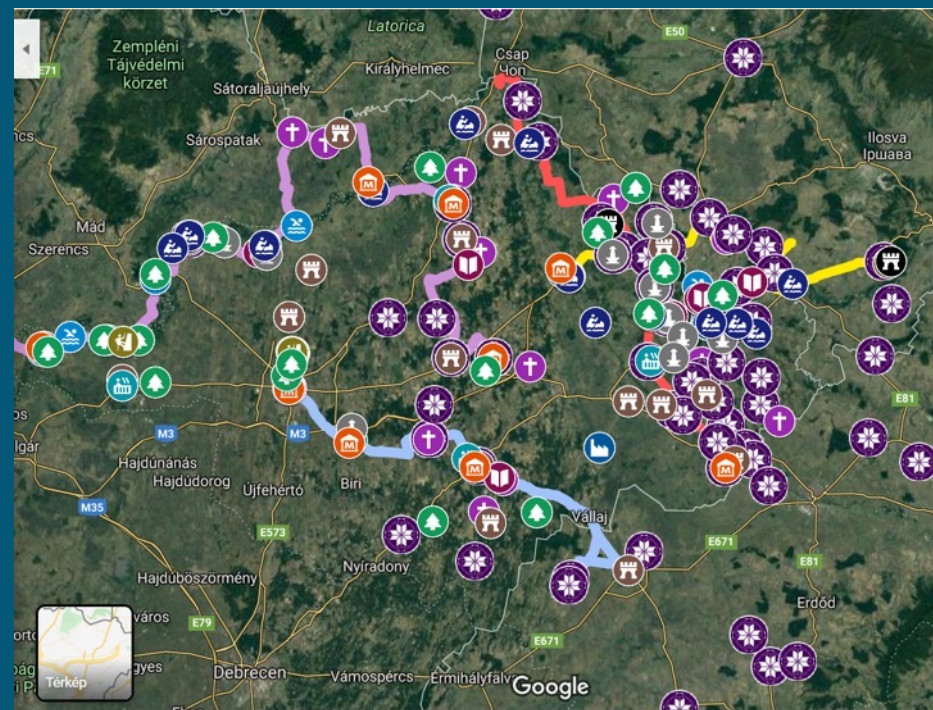
# EuroVelo 11

Developments – Upper Tisza region



# EuroVelo 11

## Developments – Upper Tisza region



Thank you!

[berencsi.miklos@aofk.hu](mailto:berencsi.miklos@aofk.hu)

[www.aofk.hu](http://www.aofk.hu)

